

BASIN RANGE
2019 · 2020

nood co.[™]
CONCRETE FURNITURE

Concrete Designed &
Manufactured in Australia.

C Nood Co Concrete Furniture
W www.noodco.com.au
E info@noodco.com
P +61 0433 449 097
f [facebook.com/noodco](https://www.facebook.com/noodco)
@ @nood_co

ABN 31 166 430 173
ACN 166 430 173
REG 2013

noodco.com.au



COVER IMAGE: MEGHAN PLOWMAN

nood co.[™]
CONCRETE FURNITURE



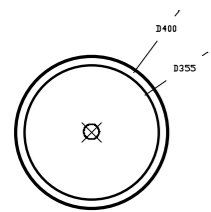
BOWL BASIN | IMAGE: NORSU INTERIORS

Contents

Circle Basins	01
Funl Basin	02
Tubb Basin	03
Stepp Basin Circle	04
Hoop Basin	05
Prism Basin Circle	06
Bowl Basin Two Tone	07
Bowl Basin	08
Rectangle Basins	10
Prism Basin Rectangle	12
Stepp Basin Rectangle	13
Vesl Basin Rectangle	14
Box Basin Two Tone	15
Box Basin	16
Trough Basin	17
Square Basins	18
Vesl Basin Square	20
Cube Basin	21
Oval Basins	22
Pill Basin	24
Vanity Basins	27
Box Basin Vanity Set	28
Trough Basin Vanity Set	29
Colour Range	32
Maintenance	33
Packaging and Transport	34
Nood Co Concrete Composition	34
Meet The Team	35



Funl Basin



DIMENSIONS

D 400mm x H 115mm* (D 15.7" x H 4.5")

WEIGHT

10kg* (22lb)

SEALER

Nood Co Deep Seal System

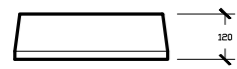
WASTE RQD

Standard 32mm (1 1/4")

WALL THICKNESS

11mm

*Measurements and weights are approx (Waste not provided by Nood Co) Colours may vary. Warranty/Packaging/Maintenance at rear of Catalogue.



AVAILABLE COLOURS

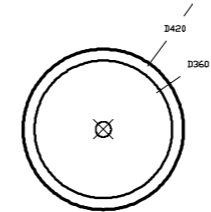


IVORY SAND CUSTARD PASTEL PEACH BLUSH PINK MUSK CLAY



POWDER BLUE COPAN BLUE MINT TEAL SKY GREY MID TONE GREY CHARCOAL

Tubb Basin



DIMENSIONS

D 400mm x H 115mm* (D 15.7" x H 4.5")

WEIGHT

10kg* (22lb)

SEALER

Nood Co Deep Seal System

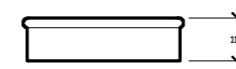
WASTE RQD

Standard 32mm (1 1/4")

WALL THICKNESS

25mm

*Measurements and weights are approx (Waste not provided by Nood Co) Colours may vary. Warranty/Packaging/Maintenance at rear of Catalogue.



AVAILABLE COLOURS

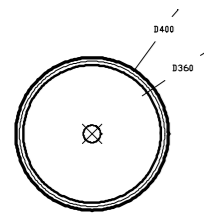


IVORY SAND CUSTARD PASTEL PEACH BLUSH PINK MUSK CLAY



POWDER BLUE COPAN BLUE MINT TEAL SKY GREY MID TONE GREY CHARCOAL

Stepp Basin | Two Tone



DIMENSIONS

D 400mm x H 115mm* (D 15.7" x H 4.5")

WEIGHT

10kg* (22lb)

SEALER

Nood Co Deep Seal System

WASTE RQD

Standard 32mm (1 1/4")

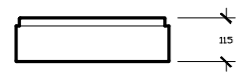
WALL THICKNESS

10mm top, 20mm base

TWO TONE STRIP

30mm from top edge

*Measurements and weights are approx (Waste not provided by Nood Co) Colours may vary. Warranty/Packaging/Maintenance at rear of Catalogue.



AVAILABLE COLOURS

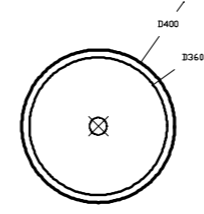


IVORY SAND CUSTARD PASTEL PEACH BLUSH PINK MUSK CLAY



POWDER BLUE COPAN BLUE MINT TEAL SKY GREY MID TONE GREY CHARCOAL

Hoop Basin



DIMENSIONS

D 400mm x H 115mm* (D 15.7" x H 4.5")

WEIGHT

10kg* (22lb)

SEALER

Nood Co Deep Seal System

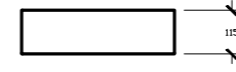
WASTE RQD

Standard 32mm (1 1/4")

WALL THICKNESS

20mm

*Measurements and weights are approx (Waste not provided by Nood Co) Colours may vary. Warranty/Packaging/Maintenance at rear of Catalogue.



AVAILABLE COLOURS

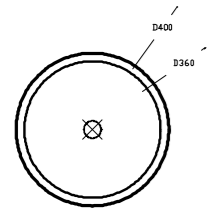


IVORY SAND CUSTARD PASTEL PEACH BLUSH PINK MUSK CLAY



POWDER BLUE COPAN BLUE MINT TEAL SKY GREY MID TONE GREY CHARCOAL

Prism Basin | Circle



DIMENSIONS

D 400mm x H 115mm* (D 15.7" x H 4.5")

WEIGHT

10kg* (22lb)

SEALER

Nood Co Deep Seal System

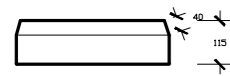
WASTE RQD

Standard 32mm (1 1/4")

WALL THICKNESS

Top 9mm
Base 20mm
Chamfer length 40mm
Side wall length 70mm

*Measurements and weights are approx (Waste not provided by Nood Co) Colours may vary. Warranty/Packaging/Maintenance at rear of Catalogue.



AVAILABLE COLOURS

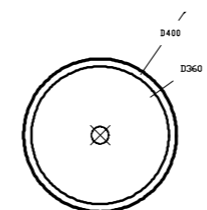


IVORY SAND CUSTARD PASTEL PEACH BLUSH PINK MUSK CLAY



POWDER BLUE COPAN BLUE MINT TEAL SKY GREY MID TONE GREY CHARCOAL

Bowl Basin | Two Tone



DIMENSIONS

D 400mm x H 115mm* (D 15.7" x H 4.5")

WEIGHT

10kg* (22lb)

SEALER

Nood Co Deep Seal System

WASTE RQD

Standard 32mm (1 1/4")

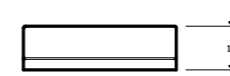
WALL THICKNESS

20mm

TWO TONE STRIP

30mm from bottom edge

*Measurements and weights are approx (Waste not provided by Nood Co) Colours may vary. Warranty/Packaging/Maintenance at rear of Catalogue.



AVAILABLE COLOURS

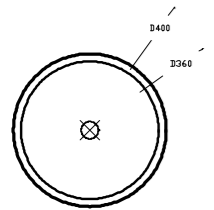


IVORY SAND CUSTARD PASTEL PEACH BLUSH PINK MUSK CLAY



POWDER BLUE COPAN BLUE MINT TEAL SKY GREY MID TONE GREY CHARCOAL

Bowl Basin



DIMENSIONS

D 400mm x H 115mm* (D 15.7" x H 4.5")

WEIGHT

10kg* (22lb)

SEALER

Nood Co Deep Seal System

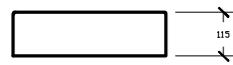
WASTE RQD

Standard 32mm (1 1/4")

WALL THICKNESS

20mm

*Measurements and weights are approx (Waste not provided by Nood Co) Colours may vary. Warranty/Packaging/Maintenance at rear of Catalogue.



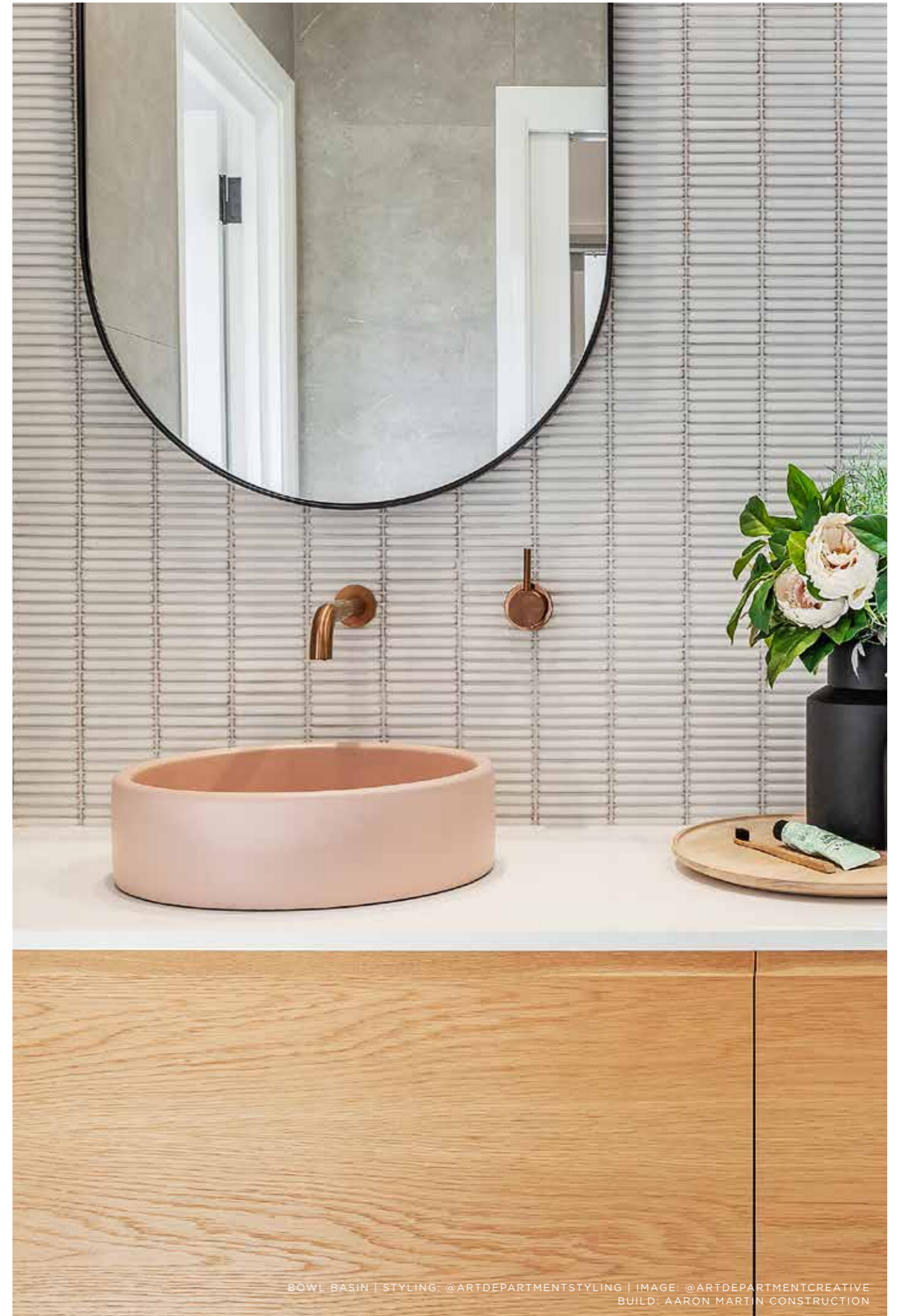
AVAILABLE COLOURS



IVORY SAND CUSTARD PASTEL PEACH BLUSH PINK MUSK CLAY



POWDER BLUE COPAN BLUE MINT TEAL SKY GREY MID TONE GREY CHARCOAL

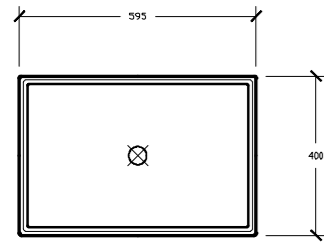
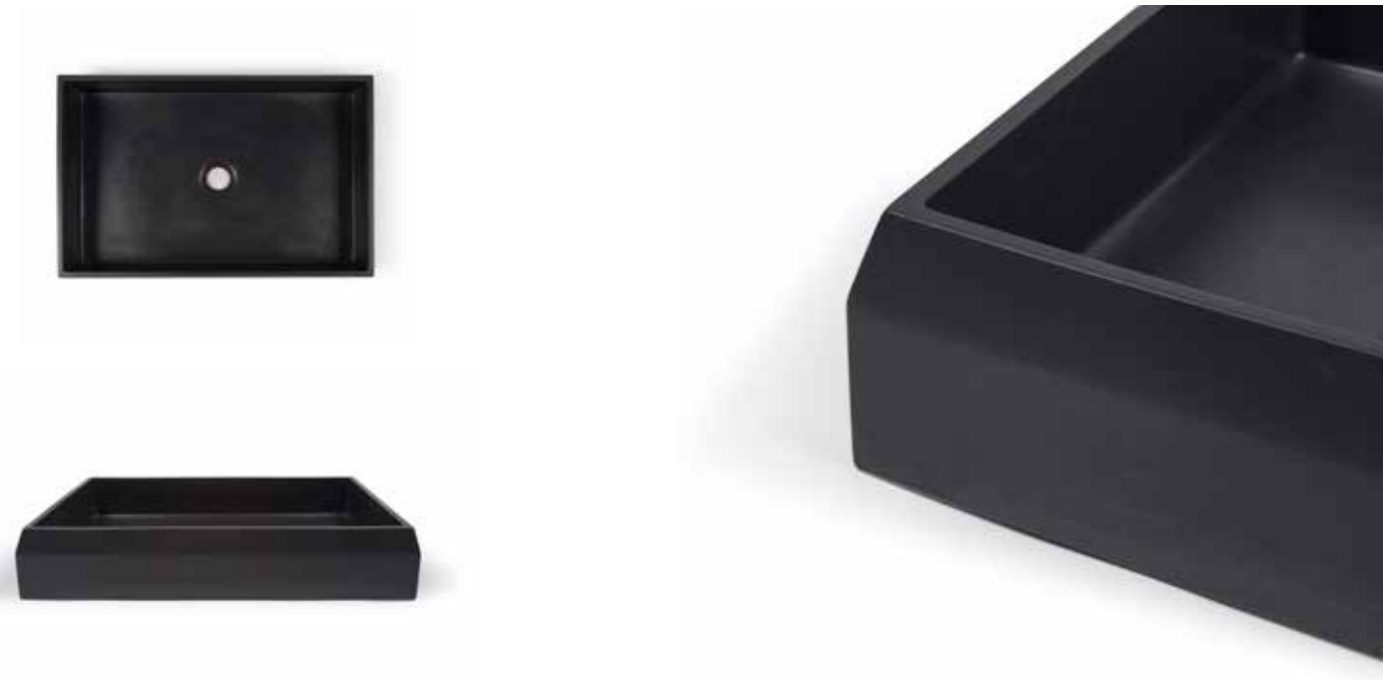


BOWL BASIN | STYLING: @ARTDEPARTMENTSTYLING | IMAGE: @ARTDEPARTMENTCREATIVE
BUILD: AARON MARTIN CONSTRUCTION



BOX BASIN | BETON HOUSE, WESTERN AUSTRALIA

Prism Basin | Rectangle



DIMENSIONS
L 600mm x W 400mm x H 115mm*
(L 23.6" x W 15.7" x H 4.5")

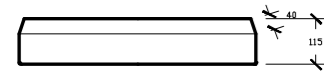
WEIGHT
16kg* (35lb)

SEALER
Nood Co Deep Seal System

WASTE RQD
Standard 32mm (1 1/4")

WALL THICKNESS
20mm
Chamfer length 40mm
Side wall length 70mm

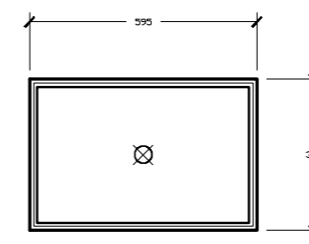
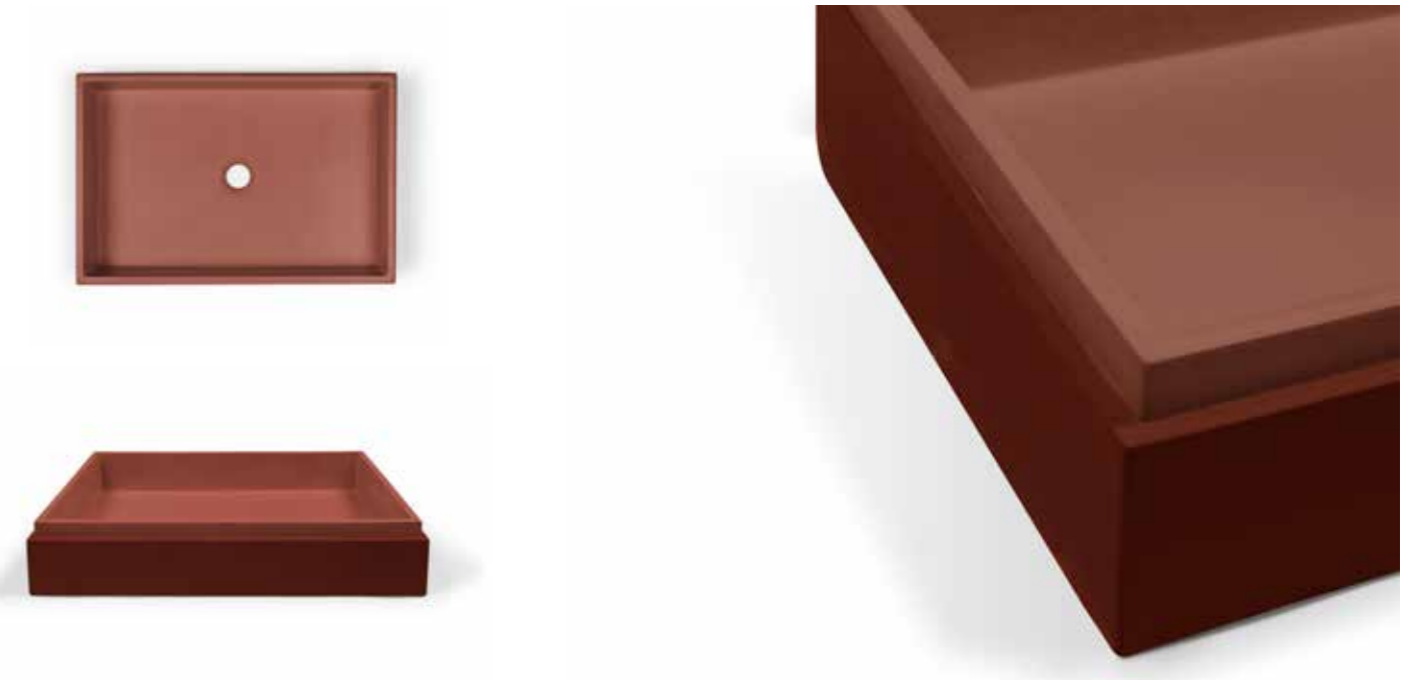
*Measurements and weights are approx (Waste not provided by Nood Co) Colours may vary.
Warranty/Packaging/Maintenance at rear of Catalogue.



AVAILABLE COLOURS



Stepp Basin | Rectangle



DIMENSIONS
L 600mm x W 400mm x H 115mm*
(L 23.6" x W 15.7" x H 4.5")

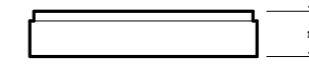
WEIGHT
16kg* (35lb)

SEALER
Nood Co Deep Seal System

WASTE RQD
Standard 32mm (1 1/4")

WALL THICKNESS
Top edge 10mm
Bottom edge 20mm
Corner edge 2mm

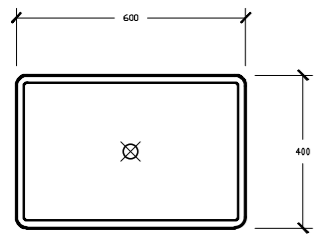
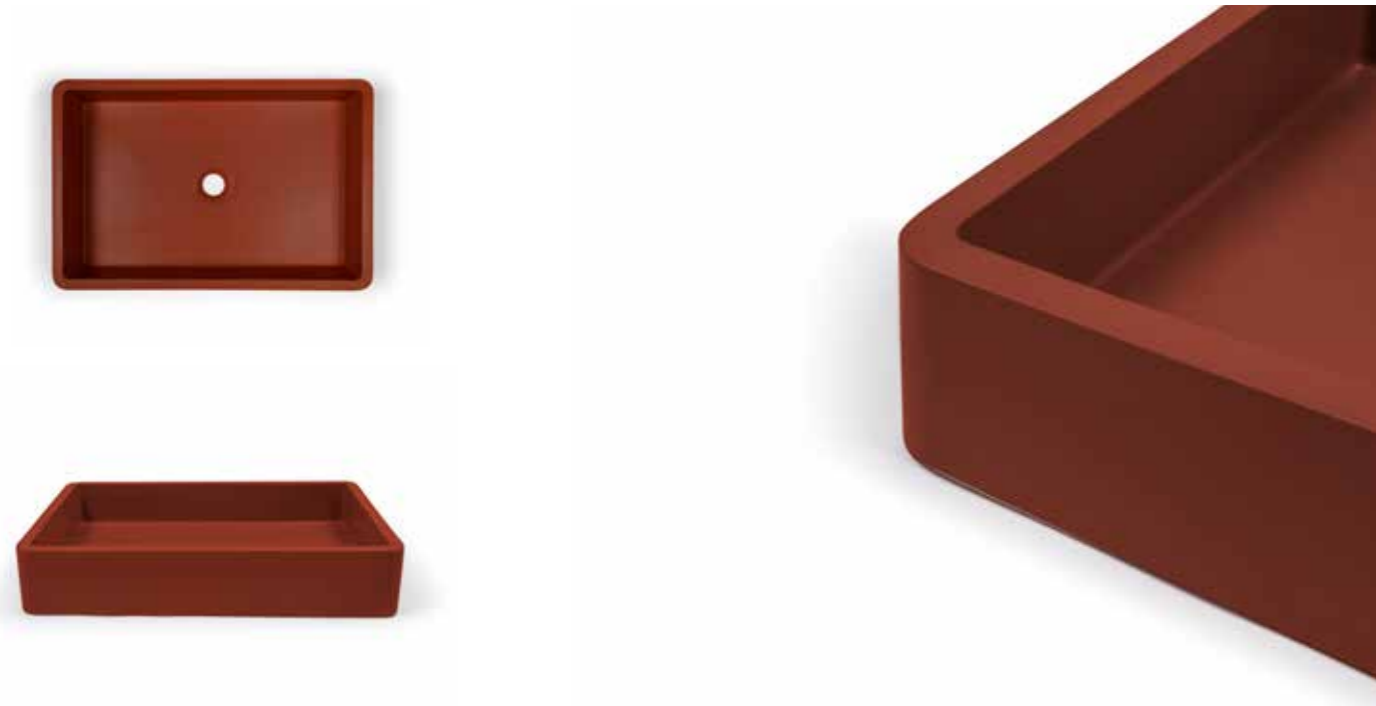
*Measurements and weights are approx (Waste not provided by Nood Co) Colours may vary.
Warranty/Packaging/Maintenance at rear of Catalogue.



AVAILABLE COLOURS



Vest Basin | Rectangle



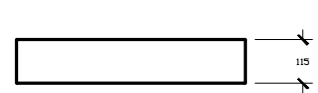
DIMENSIONS
L 600mm x W 400mm x H 115mm
(L 23.6" x W 15.7" x H 4.5")

WEIGHT
16kg* (35lb)

SEALER
Nood Co Deep Seal System

WASTE RQD
Standard 32mm (1 1/4")

WALL THICKNESS
20mm

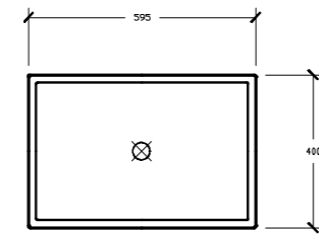
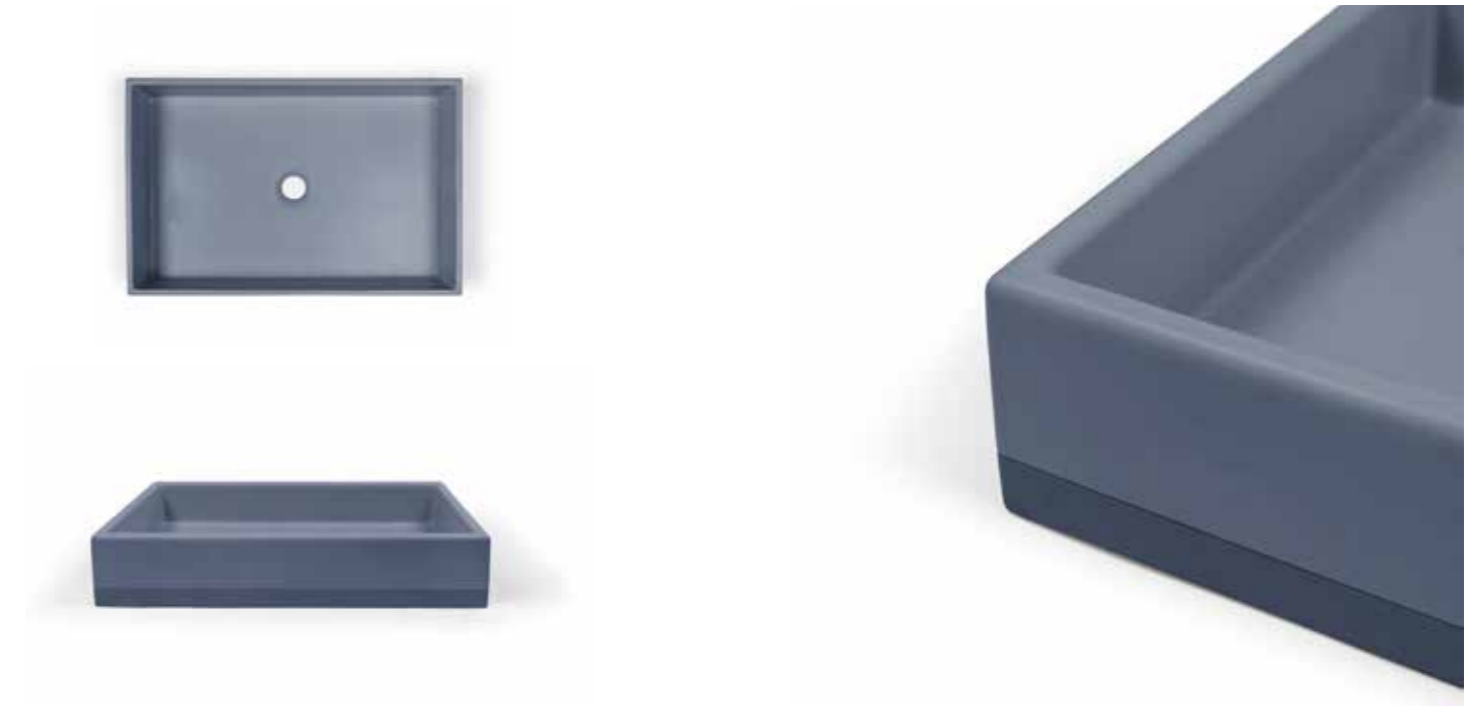


*Measurements and weights are approx (Waste not provided by Nood Co) Colours may vary.
Warranty/Packaging/Maintenance at rear of Catalogue.

AVAILABLE COLOURS



Box Basin | Two Tone



DIMENSIONS
L 595mm x W 395mm x H 115mm
(L 23.622" x W 15.748" x H 4.52")

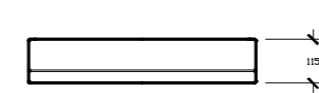
WEIGHT
16kg* (35lb)

SEALER
Nood Co Deep Seal System

WASTE RQD
Standard 32mm (1 1/4")

WALL THICKNESS
20mm

TWO TONE STRIP
30mm from bottom edge.

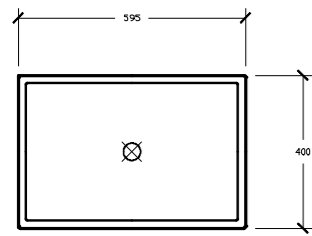
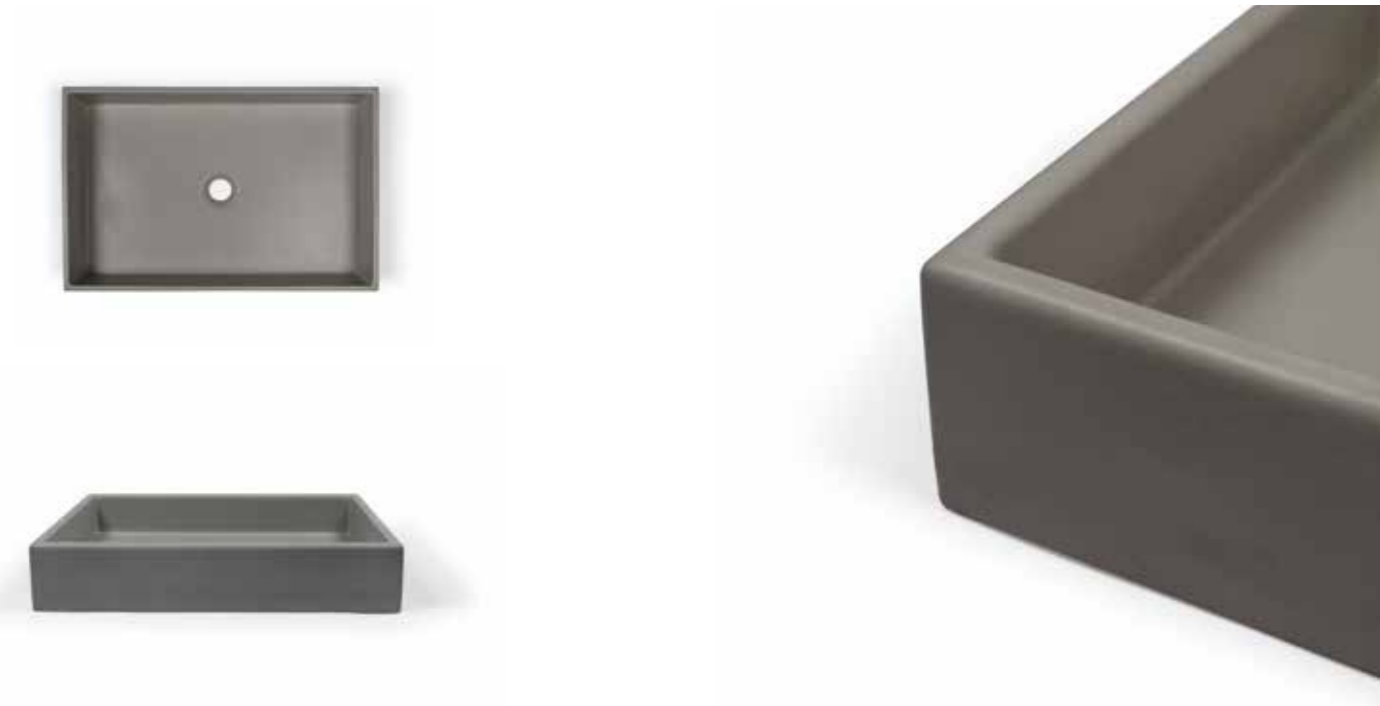


*Measurements and weights are approx (Waste not provided by Nood Co) Colours may vary.
Warranty/Packaging/Maintenance at rear of Catalogue.

AVAILABLE COLOURS



Box Basin



DIMENSIONS
L 595mm x W 395mm x H 115mm*
(L 23.6" x W 15.7" x H 4.5")

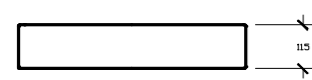
WEIGHT
16kg* (35lb)

SEALER
Nood Co Deep Seal System

WASTE RQD
Standard 32mm (1 1/4")

WALL THICKNESS
20mm

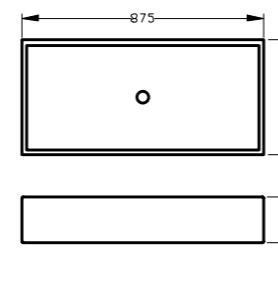
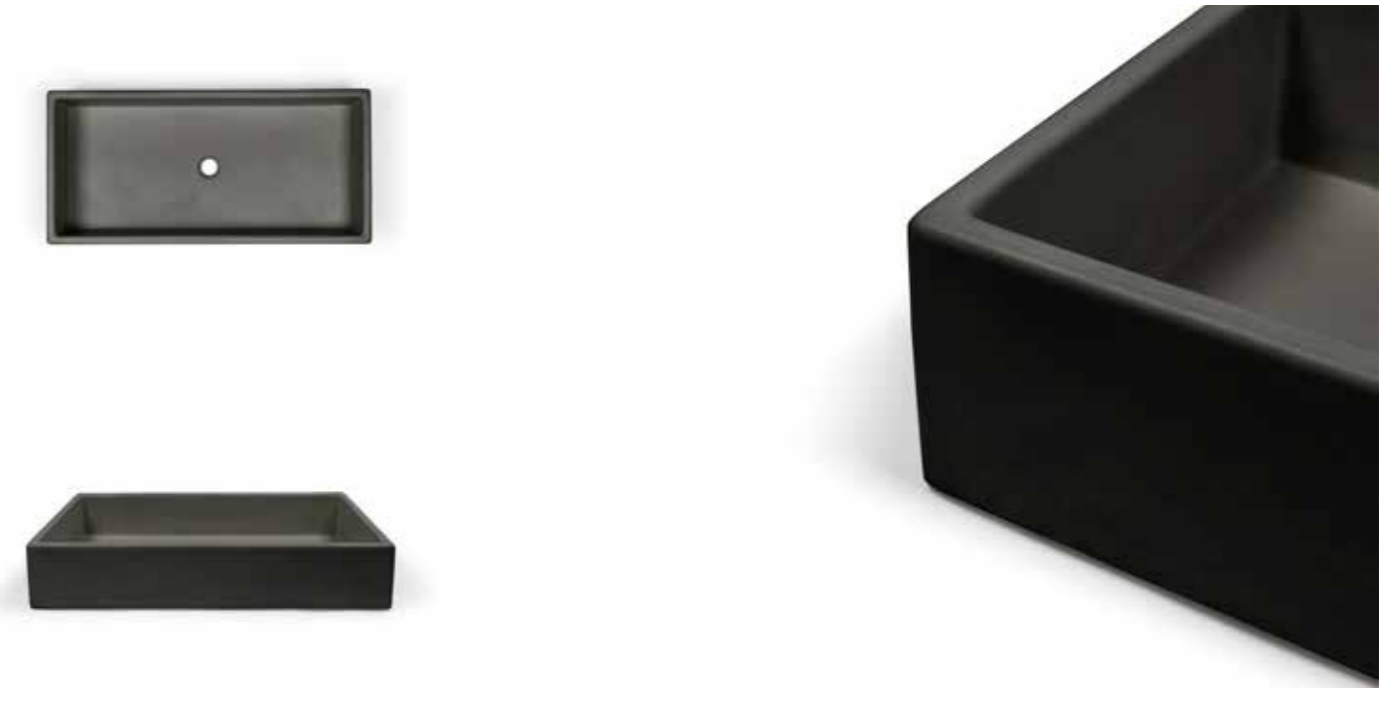
*Measurements and weights are approx (Waste not provided by Nood Co) Colours may vary.
Warranty/Packaging/Maintenance at rear of Catalogue.



AVAILABLE COLOURS



Trough Basin



DIMENSIONS
W 875mm x H 415mm x L 165mm*
(L 34.4" x L 16.3in x H 6.5")

WEIGHT
29.5kg* (65lb)

SEALER
Nood Co Deep Seal System

WASTE RQD
Standard 40mm (1 1/4")

WALL THICKNESS
20mm

*Measurements and weights are approx (Waste not provided by Nood Co) Colours may vary.
Warrant /Packaging/Maintenance at rear of Catalogue.

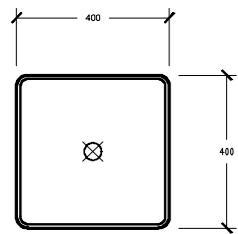
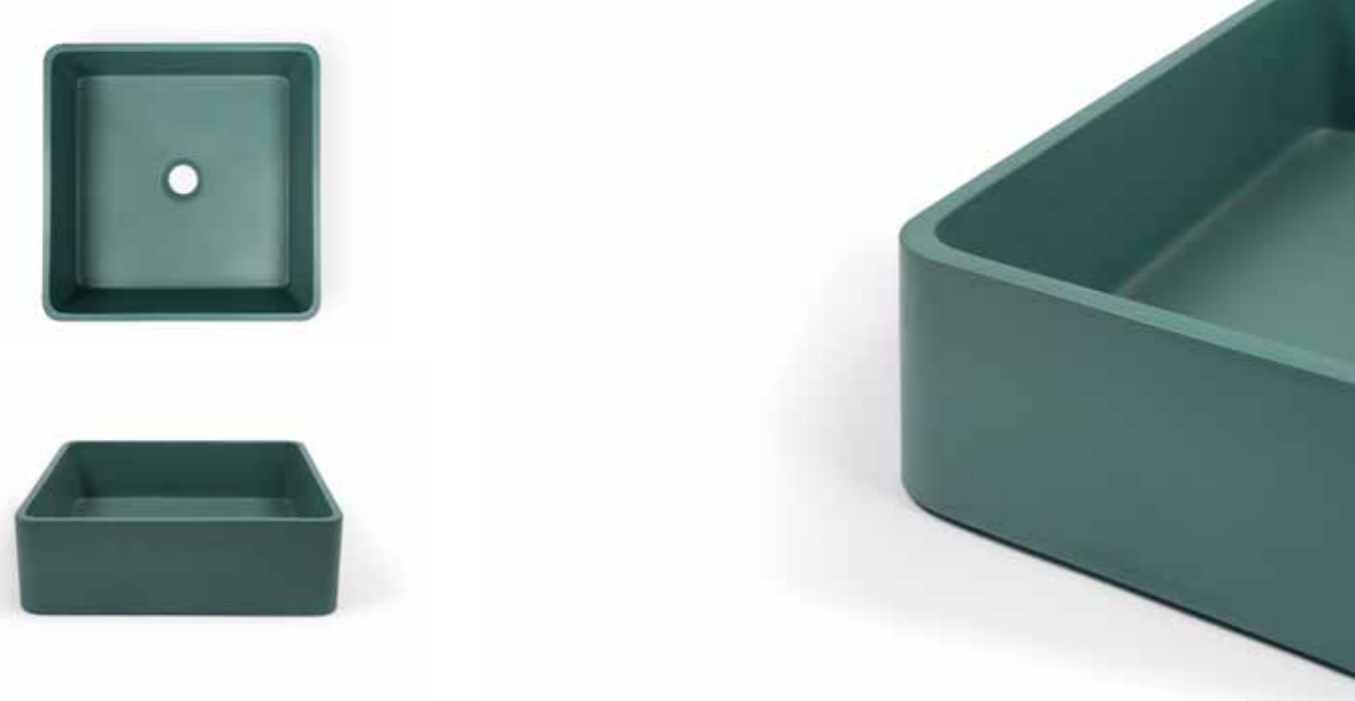
AVAILABLE COLOURS





CUBE BASIN | IMAGE: @MISSFARMERJOJO | DESIGN: @MEGMYERS1 | BUILD: SIMON KNEE BUILDING

Vest Basin | Square



DIMENSIONS

L 400mm x L 400mm x H 120mm*
(L 15.7" x L 15.7" x H 4.7")

WEIGHT

12kg* (26lb)

SEALER

Nood Co Deep Seal System

WASTE RQD

Standard 32mm (1 1/4")

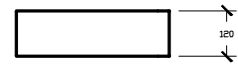
WALL THICKNESS

15mm

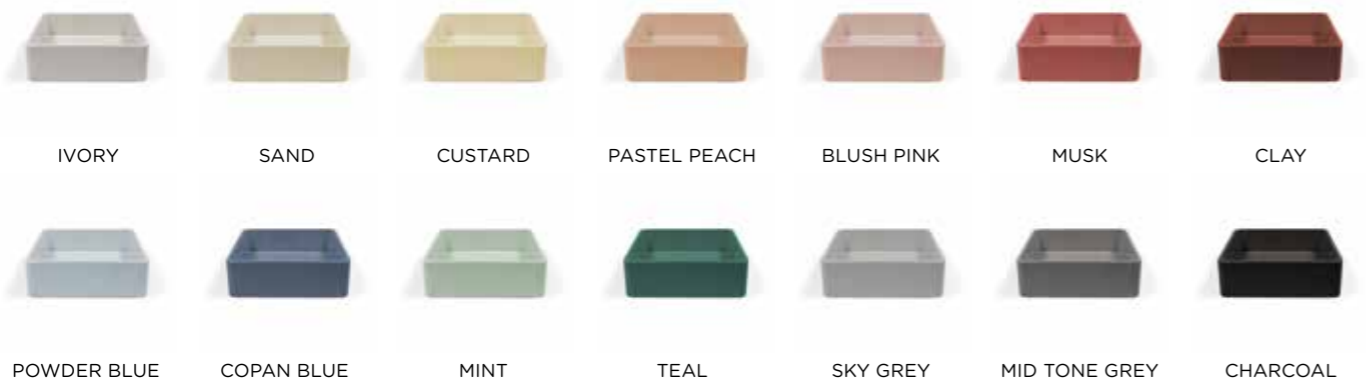
CORNER - RADIUS

35mm

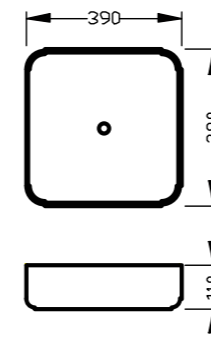
*Measurements and weights are approx (Waste not provided by Nood Co) Colours may vary. Warranty/Packaging/Maintenance at rear of Catalogue.



AVAILABLE COLOURS



Cube Basin



DIMENSIONS

L 390mm x W 390mm x H 113mm*
(L15.3" x W 15.3" x H 4.4")

WEIGHT

8.6kg* (19lb)

SEALER

Nood Co Deep Seal System

WASTE RQD

Standard 32mm (1 1/4")

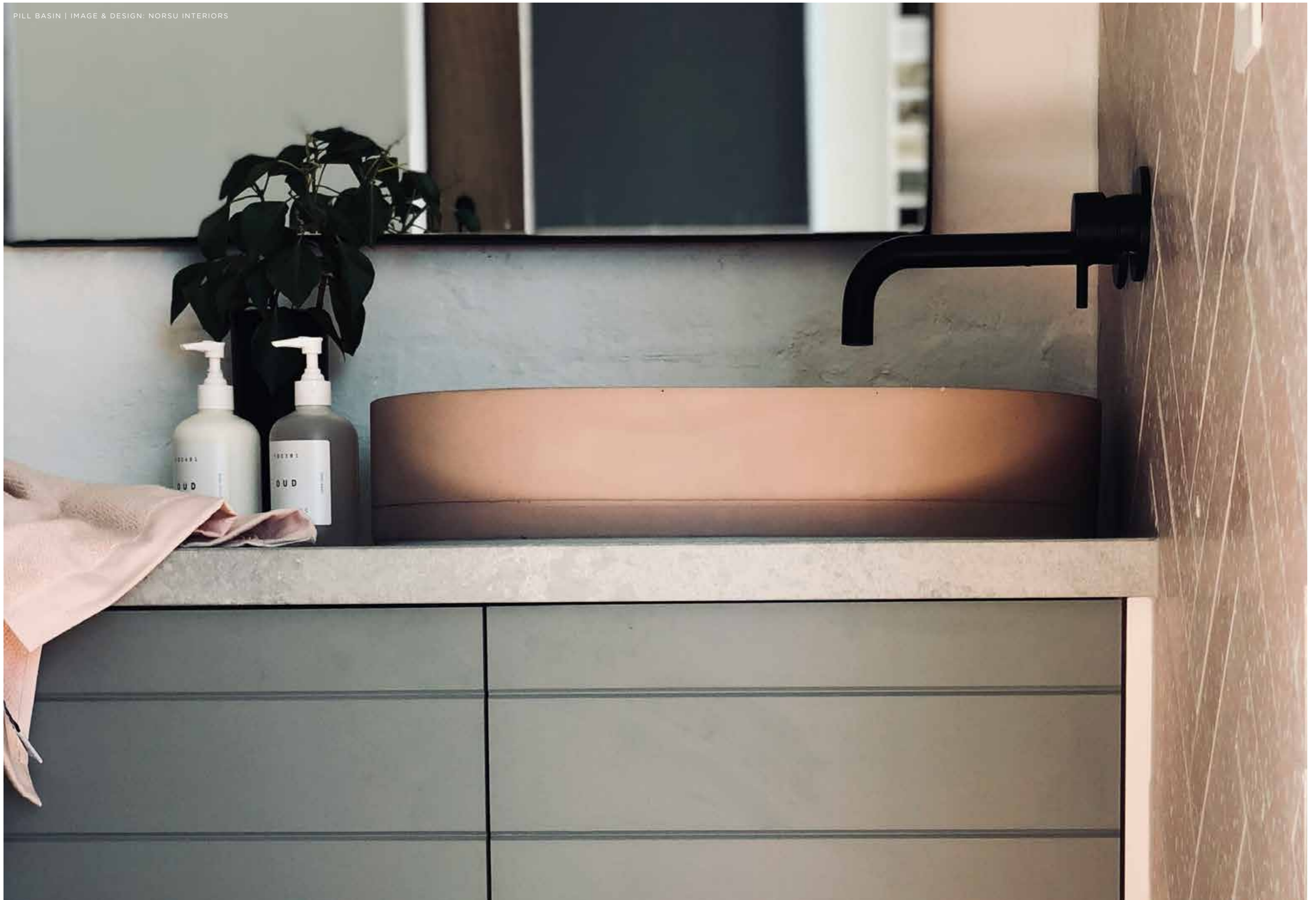
WALL THICKNESS

12mm

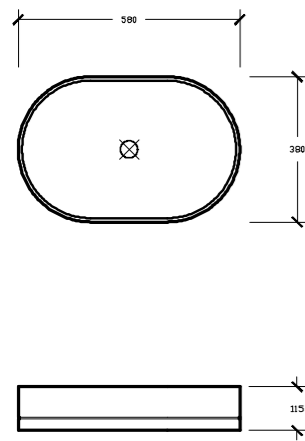
*Measurements and weights are approx (Waste not provided by Nood Co) Colours may vary. Warranty/Packaging/Maintenance at rear of Catalogue.

AVAILABLE COLOURS





Pill Basin



DIMENSIONS
 L 580mm x W 380mm x H 115mm*
 (L 22.8" x W 14.9" x H 4.5")

WEIGHT
 11kg* (11lb)

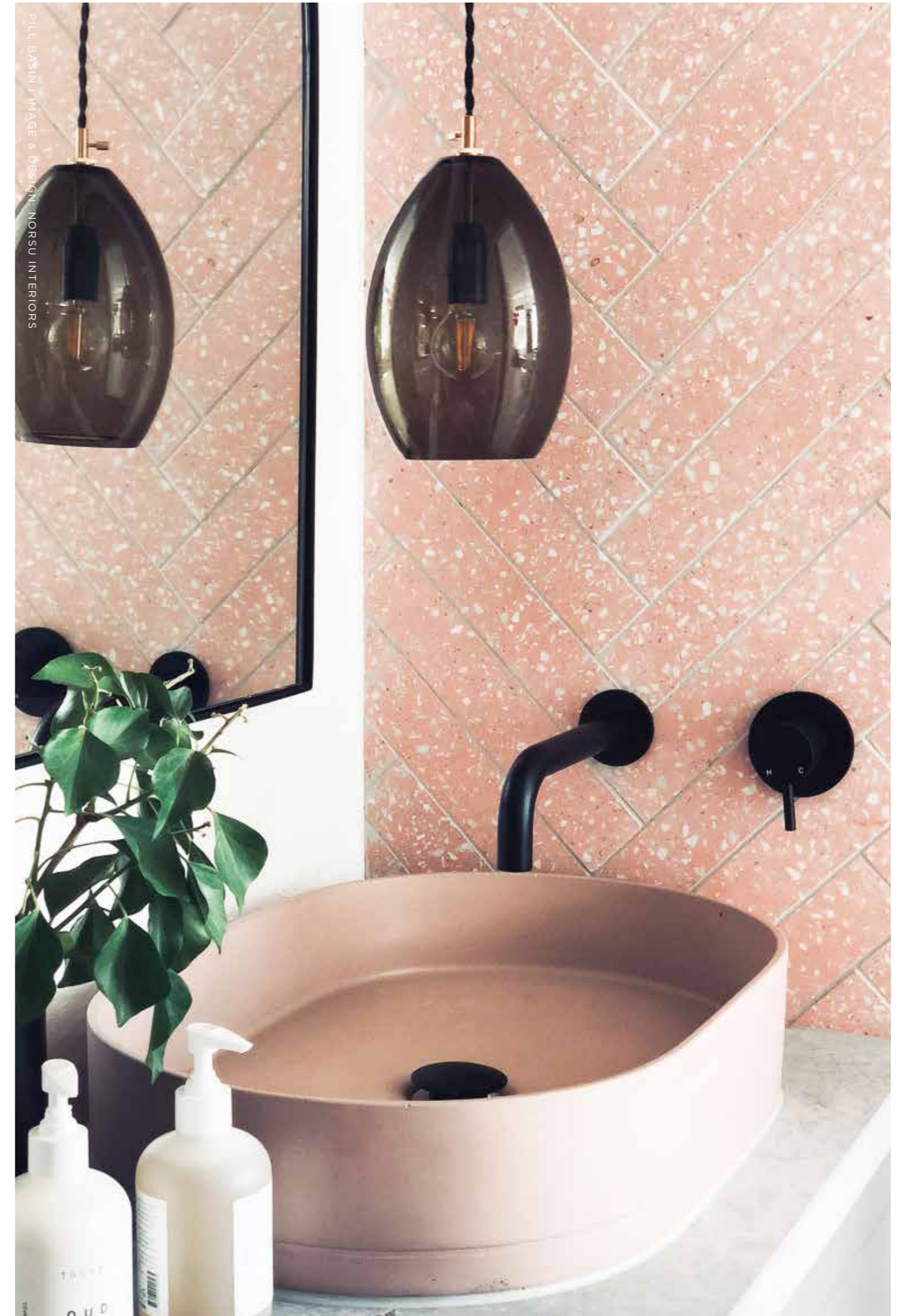
SEALER
 Nood Co Deep Seal System

WASTE RQD
 Standard 32mm (1 1/4")

WALL THICKNESS
 12mm

*Measurements and weights are approx (Waste not provided by Nood Co) Colours may vary. Warranty/Packaging/Maintenance at rear of Catalogue.

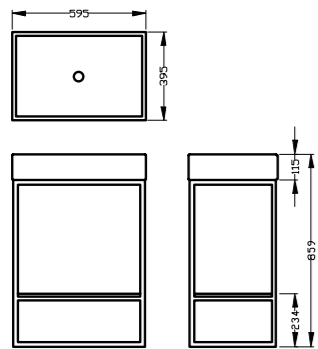
AVAILABLE COLOURS





TROUGH BASIN VANITY SET | BETON HOUSE, WESTERN AUSTRALIA

Box Basin Vanity Set



DIMENSIONS

L 595mm x W 395mm x H 859mm*
(L 23.4" x L 15.5" x H 33.8")

WEIGHT

25kg* (55lb)

SEALER

Nood Co Deep Seal System

*Measurements and weights are approx (Waste not provided by Nood Co) Colours may vary. Warranty/Packaging/Maintenance at rear of Catalogue.

WASTE RQD | Bottle Trap RQD

Standard 32mm (1 1/4")

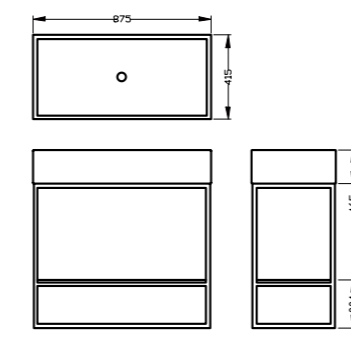
WALL THICKNESS

20mm

AVAILABLE COLOURS



Trough Basin Vanity Set



DIMENSIONS

W 875mm x H 415mm* x L 875mm
(L 34.4" x L 16.3" x H 34.4")

WEIGHT

50kg* (110lb)

SEALER

Nood Co Deep Seal System

*Measurements and weights are approx (Waste not provided by Nood Co) Colours may vary. Warranty/Packaging/Maintenance at rear of Catalogue.

WASTE RQD

Standard 40mm

WALL THICKNESS

20mm

AVAILABLE COLOURS





Colour Range



Concrete. A true picture

Nood Co concrete basins are hand made with the finest concrete and have a high level of water tolerance and stain resistance. Here is a little more about what to expect from your concrete experience.

Concrete is a natural material and hence is subject to natural and human weathering. In response to this Nood Co have added special ingredients into its mix, and deep setting sealer to greatly improve how your basin performs, giving you a long-lasting experience.

For best long term results we suggest you to:

- + Use the wax provided. Generally you'll notice when the wax has worn away and then is a good time to reapply. Instructions on how to apply the wax are provided with each basin.

- + Clean with a soft, micro fibre cloth and soapy water. See maintenance for more.
- + Clean as you spill. Stains are easily avoided by simply washing and wiping your spills as you go. For more please information see the maintenance section.
- + Avoid leaving your basin plugged and filled with water for long periods of time.
- + Closely follow the install instructions provided with each Nood package.

Concrete is a beautiful addition to your space, and well worth the small effort required to keep your space looking gorgeous.

For more please contact our friendly team at info@noodco.com.au

Maintenance

Looking after your Nood basin is super simple, but everyone says that.

So, what can I realistically expect from my Nood basin experience?

Our concrete is sealed with a very effective, deep penetrating sealing system to allow a real-world function. With that said, Nood isn't ceramic, it's beautiful concrete and so we have some helpful tips to keep your basin even more beautiful for years to come.

Cleaning

Nood present the most advanced concrete composition on the market, we still encourage you to clean your spills as you go. Simply wash your spills away with soapy water and a soft, micro fibre cloth. Please avoid scourers and strong cleaning chemicals.

Please immediately clean strong staining products such as coffee scrubs, acid-based products. Leaving these stains for over 6 hours, although unlikely, may mark/etch the concrete.

For more information please check out our maintenance video at noodco.com.au

Scratching/chips

Hey, it happens from time to time.

As your basin ages, it's likely that some minor scratching may have taken place. While this aligns with the natural beauty of concrete it may not always align with the client perception. Nood have colour repair kits ready to send out. They are simple to apply and will allow you to touch up any small imperfections on your basin.

For more information about repairs please email us at info@noodco.com.au

Water drops in your basin

Water drops are free to dry out in your basin. We've tested it, we've adjusted our concrete to it, and we've made sure this won't be an issue for you. 95% of water drops will dry into your concrete in a seamless way. The other 5% will leave a white ring on your basin. In this rare case, simply wipe down with clean water and a microfibre cloth. Nice and easy.

What's this waxing business? Sounds like work

Not at all. Each Nood piece is carefully sealed and pre waxed prior to delivery. The basins are then packaged and sent out with spare maintenance wax and instructions so you can self-apply as necessary. The wax assists with abrasion and stain resistance. Simply apply more as you see it wear off. It's simple.

To view the wax application video please visit us at noodco.com.au

How often do I wax?

Nood have tested it. The average frequency in which you'd need to reapply your wax, given you used your basin for 5 mins, twice a day, is once every 3 months.

Nood have spare wax for when you require more, and we send out instructions on how to apply the wax with each basin. They are also available on our website.

To view the wax application video please visit us at noodco.com.au

Packaging and Transport

Nood take the most care when it comes to packaging and transport. Each package is carefully wrapped in different grades of foam and boxed firmly with thick cardboard. Each package has flex points to allow for safe international and domestic travel.

Nood offer tracking with each package and a close access of communication. After all, this is your experience that we are excited to be a part of.

Nood Co Concrete Composition

Real beauty is on the inside.

The Nood concrete composition is a complex one. We won't bore you with too many details, but the Nood concrete is made of 8 highly refined components. Each component assists in a specific way, be it improving the concrete strength, the water ratio, mix integrity, water tolerance, colouring, durability and more.

We feel Colonel Sanders pain.

Everything from Nood Co has been a ground up build. From product design to concrete composition, sealing to packaging, every step of the process was dreamt up, tested and approved by Nood Co.

When you buy Nood Co you are purchasing something unique. You are buying the process, the love we willingly commit, so you can experience something with soul.

Aw...



Meet The Team



Marc

Photography

Marc is a seasoned portrait and product shoot photographer. An important part of our brand is aptly presenting the ideals and culture that our products suggest. Nood doesn't get anymore Marc, and Marc doesn't get anymore Nood.



Joelle

Front End Manager

Joelle is Nood Co's front end manager. Her extensive skill set includes product, graphic and magazine design, coding and website building, copywriting... the list goes on. Joelle's knowledge of high end furniture is unrivalled, and she leads a team ready to assist with your order.



Chris

Product Development/ Head Manufacturer

Chris is head of product development and manufacture. His understanding of chemical composition and material usage in natural material - be that in chemical analysis, mechanical education, wet and dry concrete applications, extensive welding/ manufacture/ assembly study is unrivalled. Chris makes it look easy, and it's seriously not.



Claire

Graphic Design/ Brand Development

Claire is an award winning graphic artist with a monster catalogue of original art, brand development and insane logo treatments. Her brand development is slick, super on trend and always completely original. A good portion of Noods energy is Claire.



Matt

Product Designer/ Procurement

Matt is Noods lead product designer. He determines the mood, colour and general vibration for the Nood aesthetic. His design/moral compass is aimed toward originality and genuine connection.



Meghan

Styling/ Photography

Meghan is a highly regarded product stylist and photographer. She is responsible for the Nood Co product styling and shoots. Her storytelling within each shot is breath taking, so if you like what you see, you can thank Meghan.



Connor

Manufacturer

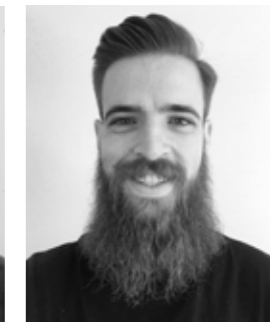
Connor co-runs the manufacture floor at Nood Co HQ. An ever growing platform, Connor ensures the staff training is under constant monitor. With a trained eye for detail you can thank Connor for Nood's exponential growth and consistent quality.



Matt

Manufacturer

Matt co-runs the manufacture floor for Nood Co. In charge of the finesse of each product, Matt drives our team of makers to ensure each piece of concrete is made with precise love.



Cory

3D Modelling/ Cad

Masters qualified in Architecture, Cory aids the Nood design team in shaping up their visions into workable 3D models. Cory has a strong gauge for proportion, aesthetic and structural engineering.



Renoy

Accounts

Renoy is the financial and strategic backbone of Nood Co. He directs the Nood management team with a sound understanding of cashflow and company scaling.